

COMPATIBILITY VIEW SETTING FOR INTERNET EXPLORER 11



Contents


How do I determine my version of Internet Explorer? 2

How to Turn Internet Explorer Compatibility View 4

How do I determine my version of Internet Explorer?

To find out what version of Internet Explorer you are using, perform the following steps:

STEP 1

- 1) Open **Internet Explorer** . (you may already have it open if you are reading this page on the Internet)

Notes :

- Windows XP with Internet Explorer 7: (Doesn't Require upgrading). Any version older than Explorer 7 will need to upgrade.
- The easiest way to download and install the latest version of Internet Explorer is to visit www.microsoft.com/ie.

STEP 2

- 2) Make sure you tick your Menu Bar as below.



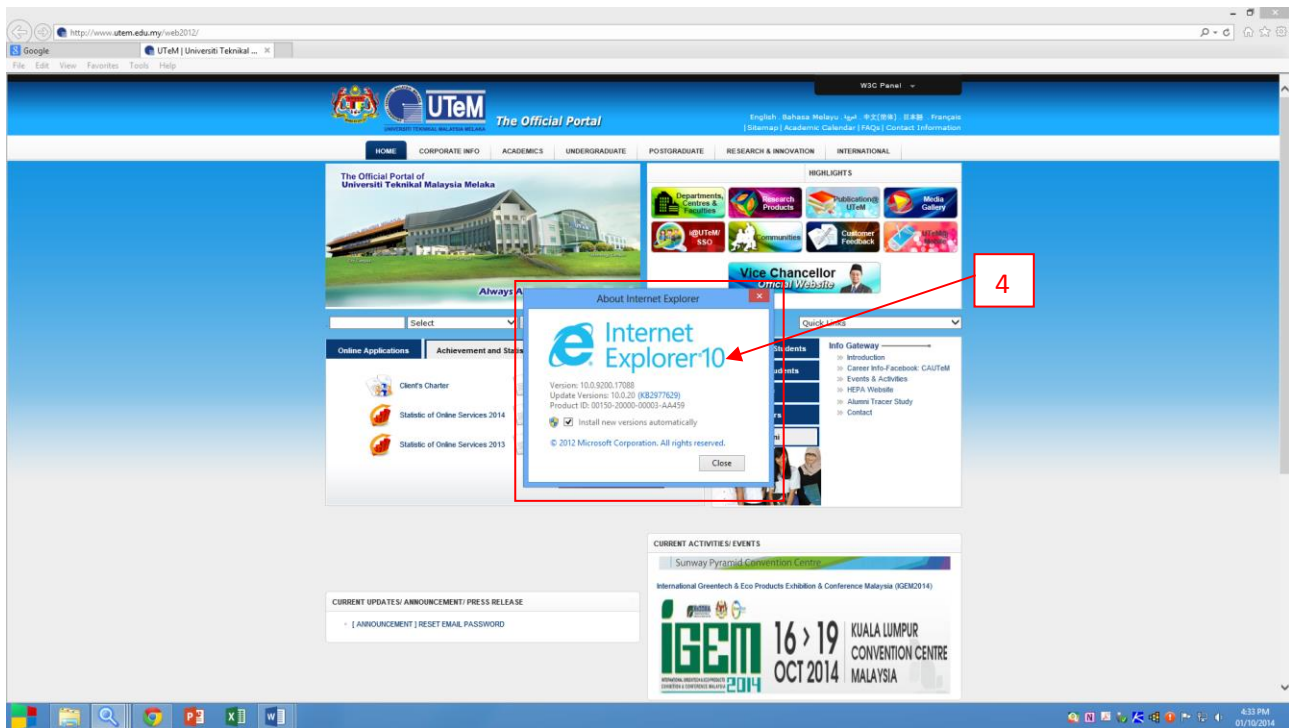
STEP 3

3) From the Help Menu select **About Internet Explorer**.



STEP 4

4) Information about the version you are using will be displayed.



How to Turn Internet Explorer Compatibility View

Information

System that develop by UTeM is designed for earlier versions of Internet Explorer might not display correctly in Microsoft Internet Explorer 7.0 above.

When you turn on Compatibility View, the webpage you're viewing, as well as any other webpages within the website's domain, will be displayed as if you were using an earlier version of Internet Explorer.

This step will show you how to add (turn on) and remove (turn off) websites to be displayed in Compatibility View.

STEP 1

1) Through Compatibility View Settings

NOTE: This will let you turn on or off Compatibility View for a webpage by adding or removing the webpage address from the Compatibility View list.

STEP 2

2) Click on the **Tools** Menu Bar (ALT+T) item, and go to step 3 below. (See screenshot below)

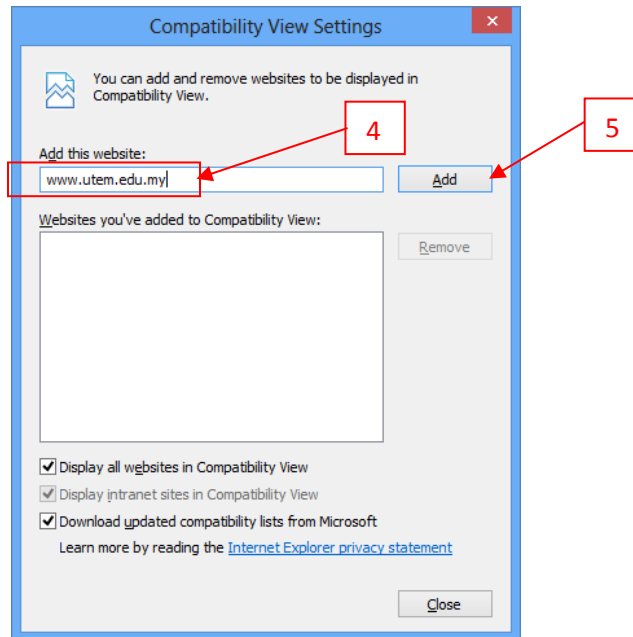


STEP 3

3) Click on **Compatibility View Settings**. (See screenshots below)

STEP 4

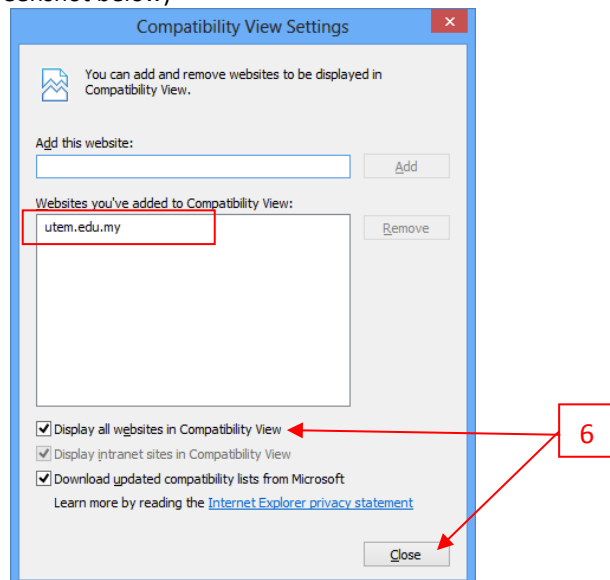
- 4) To add a Website to the Compatibility View List, type the webpage address, eg: www.utem.edu.my.



NOTE: The current webpage address will automatically be filled in for you. Just clear it if you want to add a different address instead.

STEP 5

- 5) Click on the **Add** button. (See screenshot below)



STEP 6

- 6) Tick the **“Display all websites in Compatibility View”** and click the **Close** button.